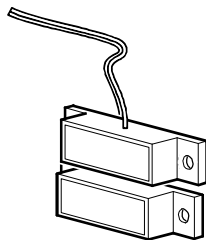




by Schneider Electric

# NetBotz<sup>®</sup> Door Switch Sensor for Rooms or Third-Party Racks (NBES0302)—Installation Instructions

## Inventory



Door switch sensor with  
15.24-m (50-ft) cable (1)



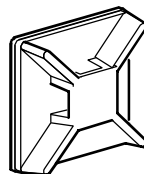
#4 x 1/2-in screw (4)



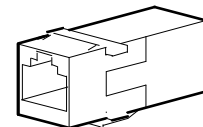
63.5-mm (2.5-in) dual  
adhesive tape (2)



203-mm (8-in) tie wrap (20)



Adhesive cable tie holder (10)



RJ-45 coupling (1)

## Installation



**Caution:** Make sure you connect this sensor to a **Sensor** port on applicable NetBotz products. See your NetBotz product documentation for details.

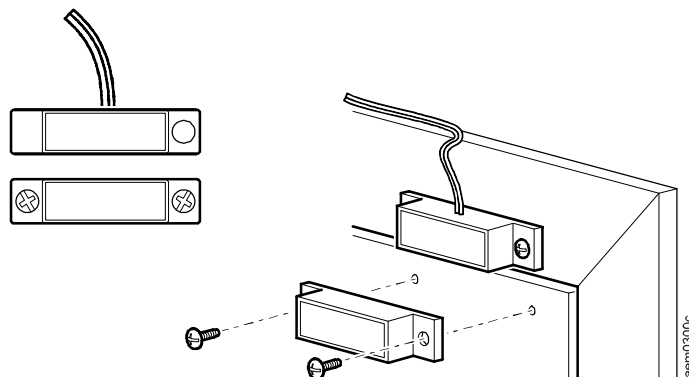


**Note:** You can extend the length of the sensor cable up to 30.5 m (100 ft) using the RJ-45 coupling and standard CAT-5 cabling.



**Note:** Use adhesive cable tie holders and tie wraps to secure the sensor cable.

## Room door-mounting option



## Rack door-mounting option



Customer support and warranty information is available at the APC Web site, [www.apc.com](http://www.apc.com).

© 2008 American Power Conversion. All rights reserved. All APC trademarks are property of American Power Conversion. Other trademarks are property of their respective owners.

**990-3378A**  
**10/2008**

