

# CM0264

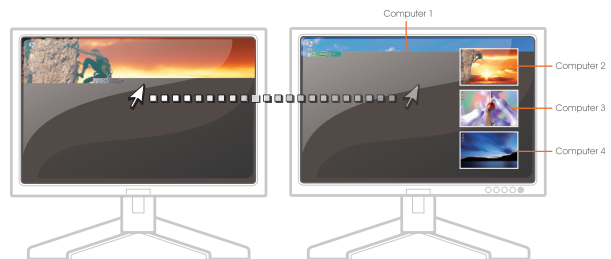
## 2x4 DVI-HD Audio/Video Matrix KVM<sup>™</sup> Switch

Control Two DVI Computers and Two HD Computers/Devices from One Dual Display Console

- The CM0264 2x4 DVI-HD Audio/Video Matrix KVM<sup>™</sup> Switch's Dual Display Console supports one DVI display and one HD display, allowing users to access 4 computers/devices from a single console, consisting of USB keyboard, USB mouse, HD display, and DVI display. As a USB hub, it permits each computer to access connected peripherals on a one-computer-at-a-time basis.

With its unique design and innovative features, the CubiQ<sup>™</sup> CM0264 2x4 DVI-HD Audio/Video Matrix KVM<sup>™</sup> Switch provides both style and functionality for the SOHO environment. Allowing you to switch seamlessly between two HD - and two DVI-enabled PCs, and share USB peripherals and high-definition audio from a single dual-display console, the CM0264 is ideal for multimedia applications, and offers the ultimate in space-saving, streamlined KVM technology for the desktop.

**CubiQ<sup>™</sup>**



## Features

- One Dual Display USB console independently and simultaneously controls two DVI computers, two HD computers or devices, and two additional USB devices
- Dual Display – simultaneously control one computer on one display and view another source on the other display
- Graphical User Interface (GUI) for convenient, user-friendly operation
- Innovative desktop control features include on-screen file transfer and copy-paste functionality, and cursor shift function in dual display mode
- 2-port USB 2.0 hub built in; fully compliant with USB 2.0 specification
- Independent switching of KVM, USB peripheral, and audio focus
- Computer selection via front panel pushbuttons, hotkeys, and GUI
- HDMI compatible; HDCP compatible
- Dolby True HD and DTS HD Master Audio support
- Superior video quality – up to 1920 x 1200 (DVI Single Link), 1080p (HDMI)
- Supports widescreen resolutions
- Multiplatform support – Windows, Linux, and Mac
- **Cursor Shift Function** – in dual-display mode, the mouse cursor can move back and forth across both displays, shifting the KVM focus
- **Video DynaSync<sup>™</sup>** – Exclusive ATEN technology eliminates boot-up display problems and optimizes resolution when switching between ports
- Power on detection – if one of the computers is powered off, the CM0264 automatically switches to the next powered-on computer
- **Console keyboard port emulation/bypass feature supports most gaming/ multimedia keyboards**
- Complete keyboard emulation for error-free booting
- Mac keyboard support and emulation\*
- Auto Scan Mode for monitoring all computers and HDMI devices
- Firmware Upgradable
- \* 1. PC keyboard combinations emulate Mac keyboards.  
2. Mac keyboards only work with their own computers

**ATEN International Co., Ltd.**

3F., No.125, Sec. 2, Datong Rd., Sijhih District., New Taipei City 221, Taiwan  
Phone: 886-2-8692-6789 Fax: 886-2-8692-6767  
www.aten.com E-mail: marketing@aten.com

Printed 09/2012 V6.0



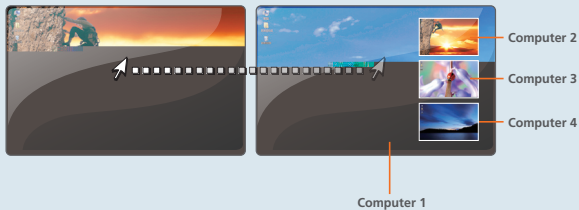
© Copyright 2012 ATEN® International Co., Ltd.  
ATEN and the ATEN logo are trademarks of ATEN International Co., Ltd.  
All rights reserved. All other trademarks are the property of their respective owners.

# CM0264

## 2x4 DVI-HD Audio/Video Matrix KVM<sup>™</sup> Switch

Control Two DVI Computers and Two HD Computers/Devices from One Dual Display Console

### Patented cursor shift function in dual display mode



Cursor Shift Function – when you are using two displays, the mouse cursor can move back and forth across the displays, shifting the KVM focus.

### View and control 4 computers on either of 2 displays



### Dual Display Console



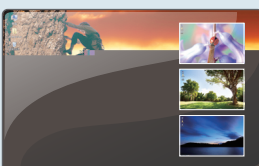
Switch between four high-definition video sources on two displays (one DVI, one HD)

### File Management



Intuitive GUI provides easy monitoring, file transfer, copy and paste and other innovative desktop control features

### Picture-in-picture (PIP) 3n1 view mode



Allows you to monitor up to four computers simultaneously. Idea for desktop multimedia applications

